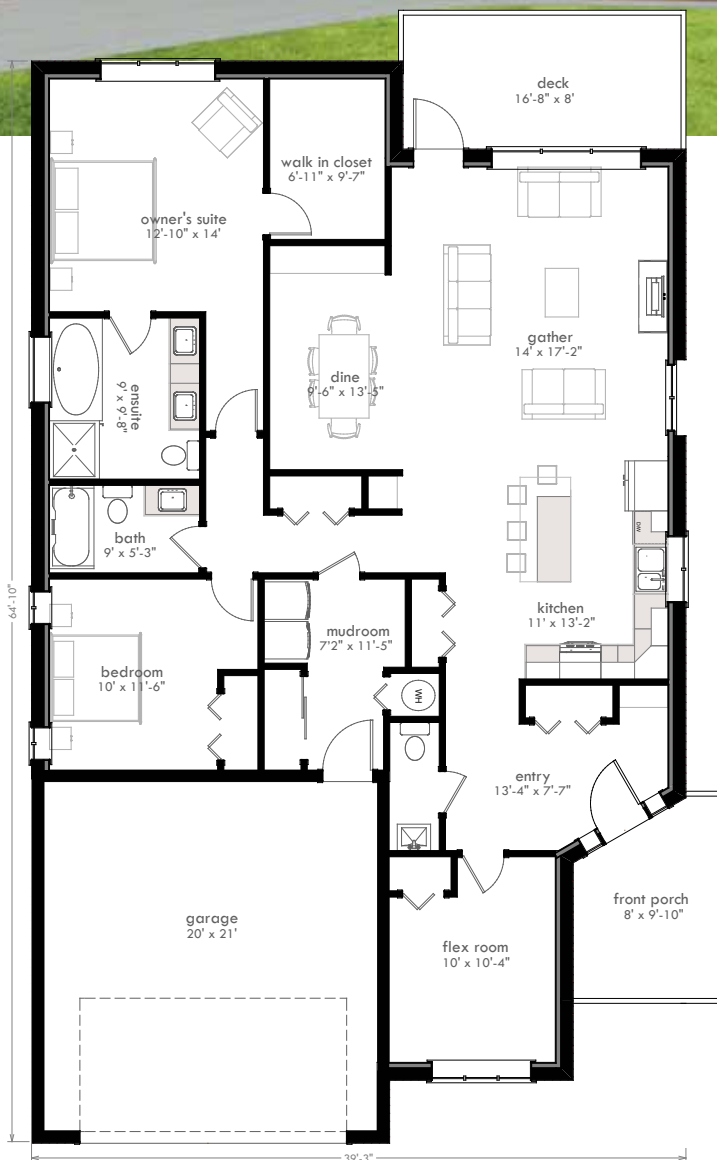


CALYPSO

by

evergreen
HOMES AND CONSTRUCTION

3 BED / 2 1/2 BATH, DOUBLE GARAGE | 1805 SQ.FT. | BUNGALOW



BUNGALOW w/ DOUBLE GARAGE
3 bedrooms, 2 1/2 bath
TOTAL: 1805 sq. ft.

**fits on 15m + lots*

WHY BUILD WITH US?

HIGHER STANDARDS

- Oversize windows to maximize light
- 9' Ceilings standard on main floor
- Engineered Silent Floor System
- Contemporary & high quality plumbing and lighting fixtures throughout
- Progressive New Home Warranty
- Superior after sales service and support
- Designer chosen finish options available to create a home that is as unique as you
- Guaranteed Certified Green on Energuide Scale
- Superior wall construction with R40 insulation
- R70 ceiling insulation
- Check out the construction specifications for more great energy saving features

Call Maggie 867.335.7029
www.homesbyevergreen.ca