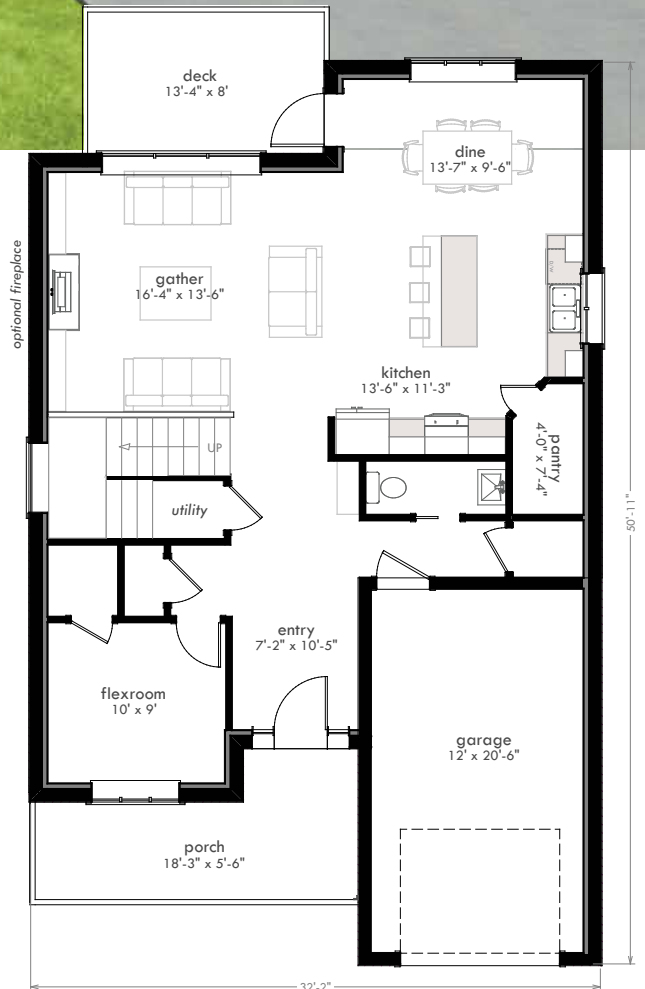
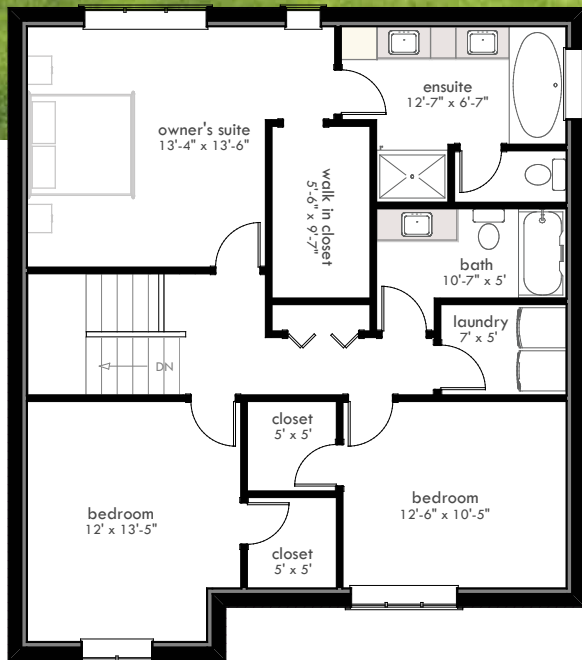


4 BED, 2 1/2 BATH, SINGLE GARAGE | TWO STOREY | 2197 SQ.FT.



2 STOREY w/ SINGLE GARAGE

Main Floor: 1073 sf | Second Floor: 1124 sf

TOTAL: 2197 sq. ft.

*fits on 14m + lots

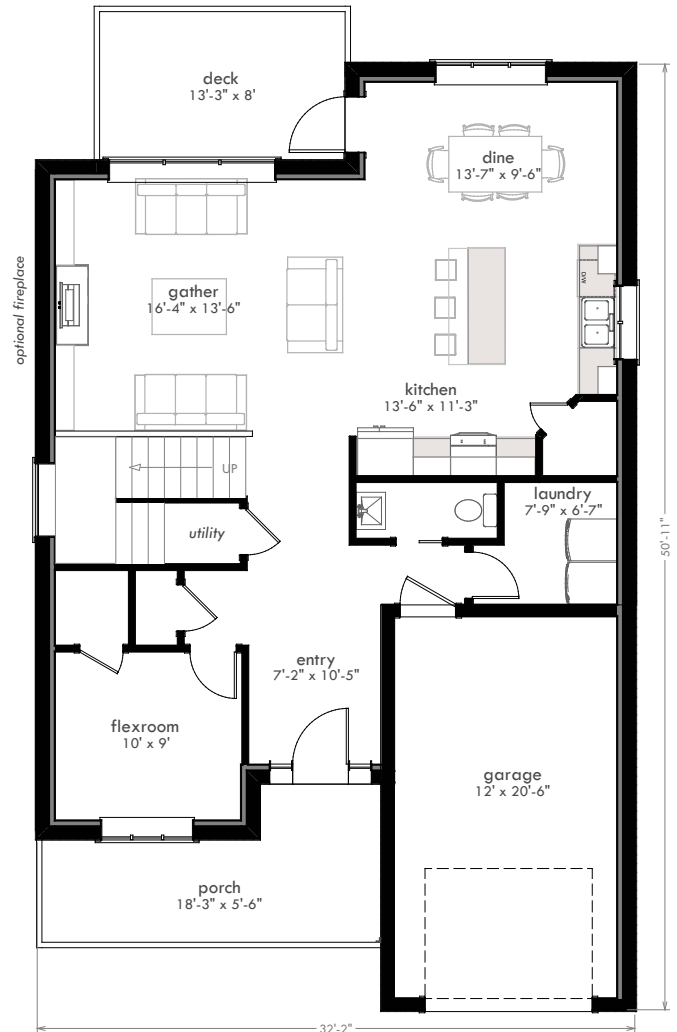
Call Maggie 867.335.7029
www.homesbyevergreen.ca

HESS

by

evergreen
HOMES AND CONSTRUCTION

4 BED + BONUS ROOM, 2 ½ BATH, SINGLE GARAGE | TWO STOREY | 2197 SQ.FT.

ALTERNATIVE LAYOUT**WHY BUILD WITH US?****HIGHER STANDARDS**

- Oversize triple glazed windows to maximize light
- 9' Ceilings standard on main floor
- Engineered Silent Floor System
- Contemporary & high quality plumbing and lighting fixtures throughout
- Progressive New Home Warranty
- Superior after sales service and support
- Designer chosen finish options available to create a home that is as unique as you

ENERGY SAVING FEATURES

- Guaranteed Certified Green on Energuide Scale
- Superior wall construction with R40 insulation
- R70 ceiling insulation
- Energy efficient heating with programmable multi zone thermostat
- Solar Energy Rough-In Ready
- HRV ventilation system for energy-efficient air exchange
- Energuide rating blower test
- High efficiency Rheem electric water heater
- R14 Fibreglass Exterior Doors
- R19 Garage Doors
- Standard energy efficient CFL lighting

2 STOREY w/ SINGLE GARAGE

Main Floor: 1073 sf

Second Floor: 1124 sf

TOTAL: 2197 sq. ft.**fits on 1.4m + lots*

Call Maggie 867.335.7029
www.homesbyevergreen.ca

