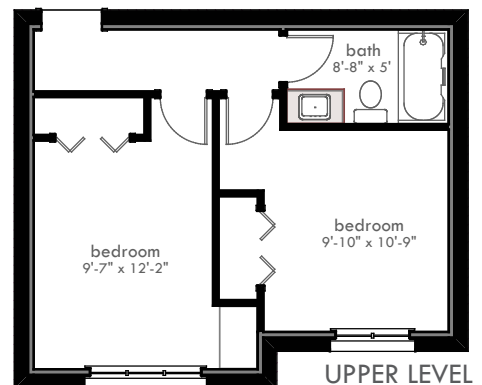
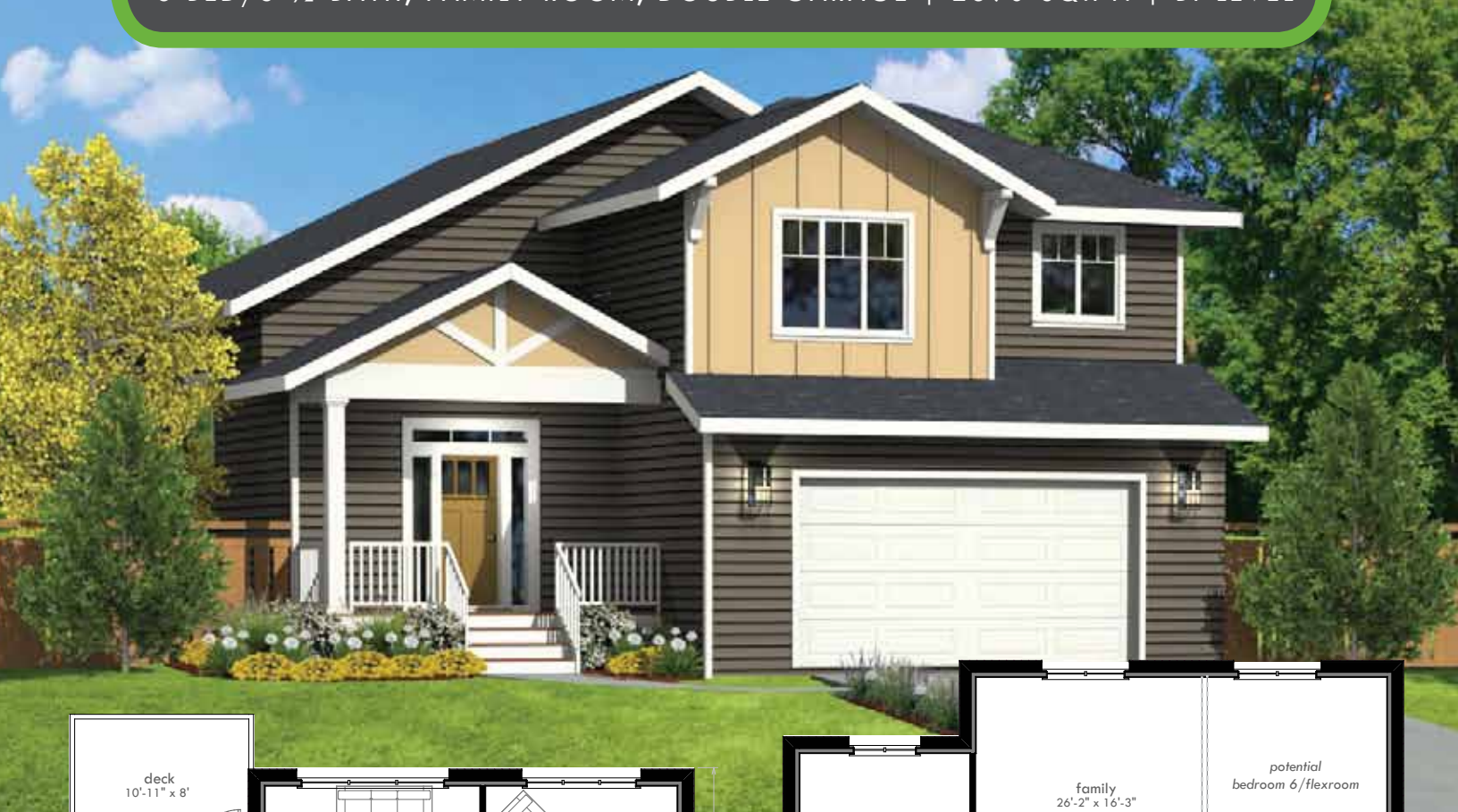


6 BED / 3 1/2 BATH, FAMILY ROOM, DOUBLE GARAGE | 2890 SQ.FT. | BI-LEVEL

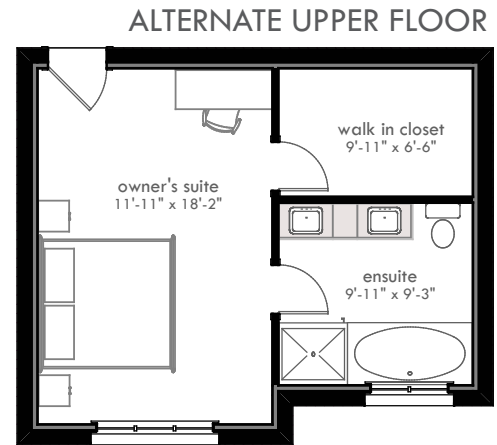
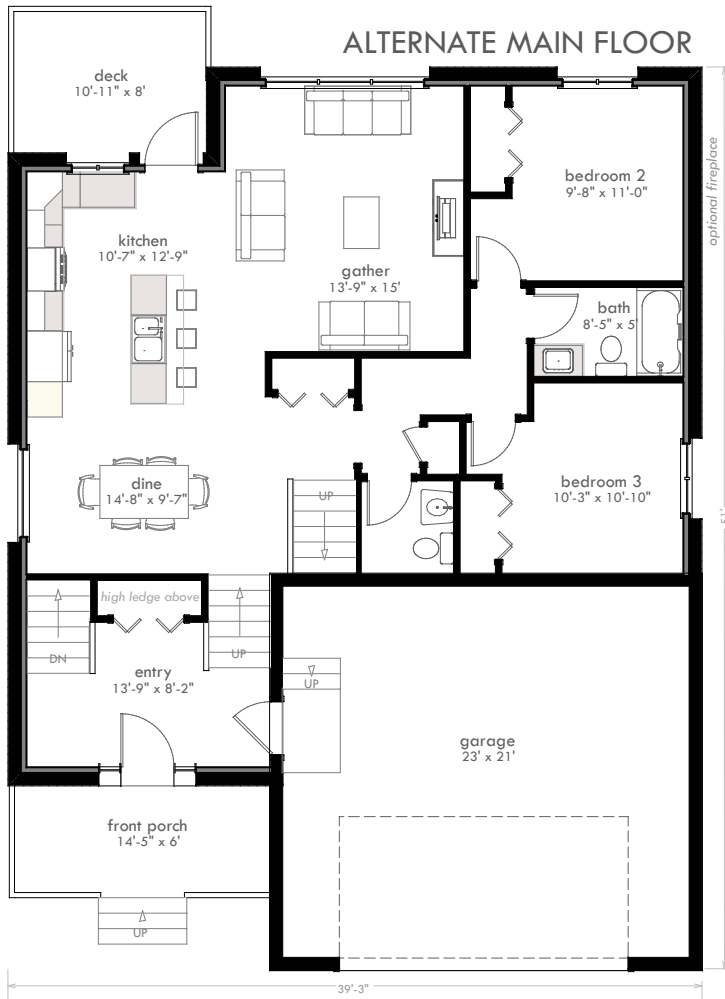


**KEELE**

by

**evergreen**  
HOMES AND CONSTRUCTION

6 BED/3 1/2 BATH, FAMILY ROOM, DOUBLE GARAGE | 2890 SQ.FT. | BI-LEVEL



## WHY BUILD WITH US?

### HIGHER STANDARDS

- Oversize triple glazed windows to maximize light
- 9' Ceilings standard on main floor
- Engineered Silent Floor System
- Contemporary & high quality plumbing and lighting fixtures throughout
- Progressive New Home Warranty
- Superior after sales service and support
- Designer chosen finish options available to create a home that is as unique as you

### ENERGY SAVING FEATURES

- Guaranteed Certified Green on Energuide Scale
- Superior wall construction with R40 insulation
- R70 ceiling insulation
- Energy efficient heating with programmable multi zone thermostat
- Solar Energy Rough-In Ready
- HRV ventilation system for energy-efficient air exchange
- Energuide rating blower test
- High efficiency Rheem electric water heater
- R14 Fibreglass Exterior Doors
- R19 Garage Doors
- Standard energy efficient CFL lighting

### BI-LEVEL w/ BASEMENT and DOUBLE GARAGE

Main Floor: 1210 sf | Second Floor: 470 sf  
Lower Level: 1210 sf

**TOTAL: 2890 sq. ft.**

*\*fits on 15m + lots*

Call Maggie 867.335.7029  
www.homesbyevergreen.ca